



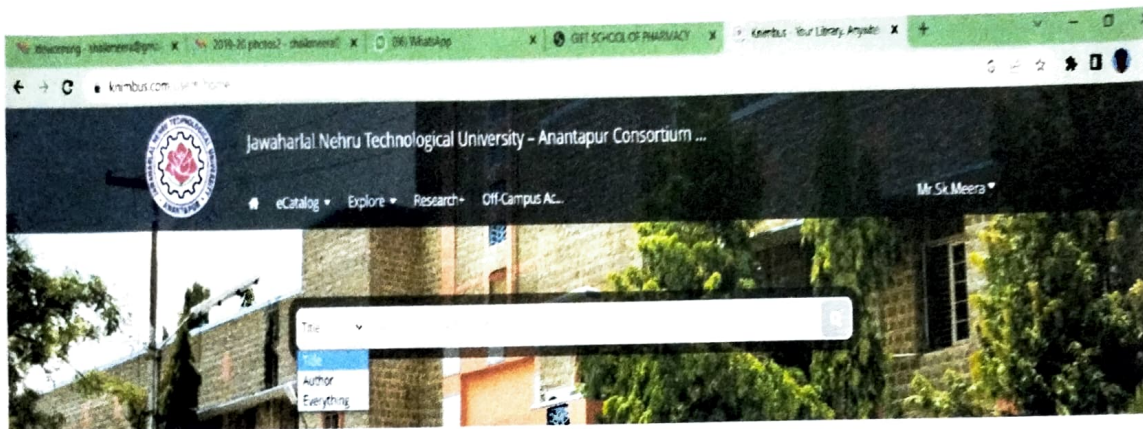
# GIET SCHOOL OF PHARMACY

(SRI KOUNDINYA EDUCATIONAL SOCIETY)

(Affiliated to Andhra University, Approved by AICTE & PCI)

NH-16, Chaitanya Knowledge City, RAJAMAHENDRAVARAM - 533 296. E.G. District., (A.P.)  
Tel : 0883 - 2484444, E-mail : gietpharmacy@gmail.com, Website : www.gietpharmacy.in

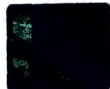
## KNIMBUS LOGIN PAGE



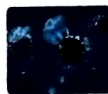
### Section [View All](#)



CBS e-Textbooks



Journals Subscription



COVID-19



PubMed Central



Springer



Theme

### Source [View All](#)



PRINCIPAL.

GIET SCHOOL OF PHARMACY.

N.H-16, Chaitanya Knowledge City

RAJAHMUNDRY - 533 296



# GIET SCHOOL OF PHARMACY

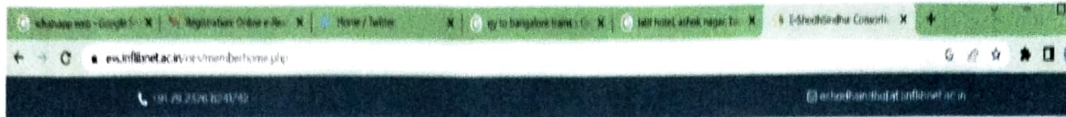
(SRI KOUNDINYA EDUCATIONAL SOCIETY)

(Affiliated to Andhra University, Approved by AICTE & PCI)

NH-16, Chaitanya Knowledge City, RAJAMHENDRAVARAM - 533 296. E.G District., (A.P.)

Tel: 0883 - 2484444, E-mail: gietpharmacy@gmail.com, Website: www.gietpharmacy.in

## E-SHODH SINDHU



## Online e-Resource Requisition System

Online e-Resource Requisition System >> Institute Profile

Welcome GIET SCHOOL OF PHARMACY

Logout | My Dashboard | Home | Change Password | Logout

[Institute Profile](#) | [Survey Details](#) | [Negotiated Status](#) | [Subscribed E-Resources](#) | [ONOS Survey](#)

Institute Profile

Global Static IP Range not found

Institute are requested to enter Global Static IP Range. After entering Global Static IP range, you are allowed to access other information.

GIET SCHOOL OF PHARMACY	Consortia Name:
📍 NH-16, Chaitanya Knowledge City, Rajahmundry, East Godavari, Andhra Pradesh - 0 /	
Librarian / Professor I/c Library Contacts: <input checked="" type="checkbox"/> Technical Contacts: <input checked="" type="checkbox"/>	
▲ M. Shank Meera	

PRINCIPAL.

**GIET SCHOOL OF PHARMACY,**  
NH-16, Chaitanya Knowledge City  
RAJAMHENDRAVARAM - 533 296



# GIET SCHOOL OF PHARMACY

(SRI KOUNDINYA EDUCATIONAL SOCIETY)

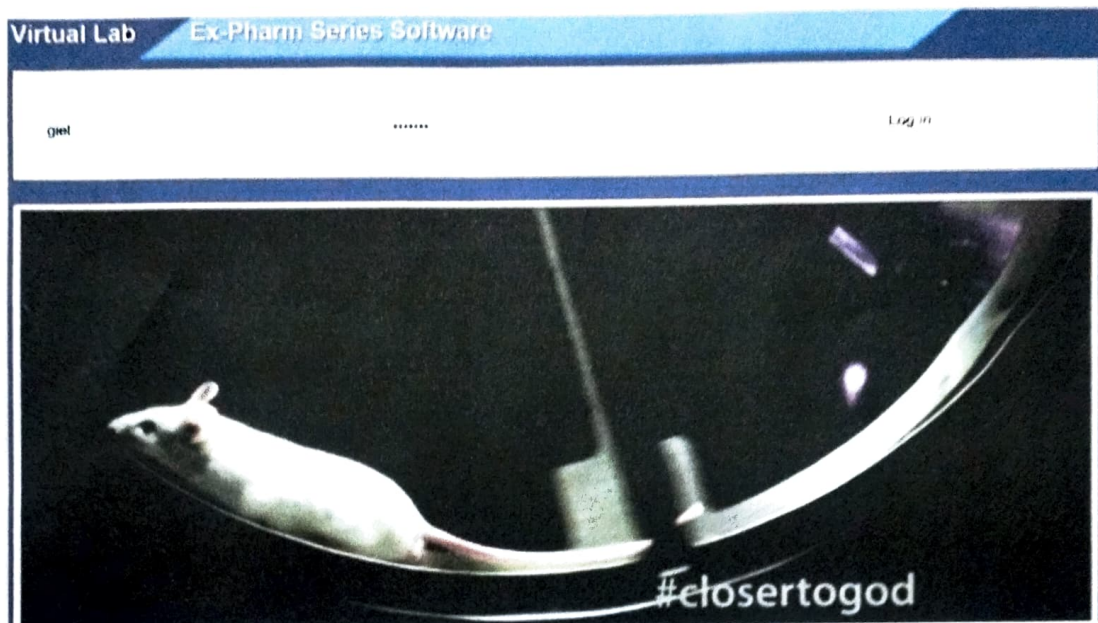
(Affiliated to Andhra University, Approved by AICTE & PCI)

NH-16, Chaitanya Knowledge City, RAJAMAHENDRAVARAM - 533 296 E.G. District (A.P.)

Tel: 0883 - 2484444, E-mail: gietpharmacy@gmail.com, Website: www.gietpharmacy.in

## EXPERIMENTAL PHARMACOLOGY (Ex-Pharm) SERIES SOFTWARE

### LOGIN PAGE



Experimental Pharmacology Series	
*	Study of muscle relaxant activity with the help of "Rota-Rod Apparatus"
*	Study of cns depressents & stimulants using "actophotometer".
*	Study of analgesic activity with the help of "tail flick apparatus".
*	Study of antihistaminic drugs with the help of histamin chamber.
*	Study of analgesic activity with the help of "hot plate apparatus".
*	Study of drugs acting on cns using "elevated plus maze".
*	Study of anticonvulsant activity using "electro convulsimeter".

PRINCIPAL

GIET SCHOOL OF PHARMACY  
 H-16, Chaitanya Knowledge City  
 RAJAMUNDY - 533 296





# GIET SCHOOL OF PHARMACY

(SRI KOUNDINYA EDUCATIONAL SOCIETY)  
(Affiliated to Andhra University, Approved by AICTE & PCI)

NH-16, Chairanya Knowledge City, RAJAMAHENDRAYARAM - 533 296, E.G. District, (A.P.)  
Tel: 0883 - 2484444, E-mail: gietcharmacy@gmail.com, Website: www.gietcharmacy.in

## MICROMEDEX 2.0 LOGIN PAGE

Merative Micromedex

Home Drug Information IV Compatibility Drug ID Drug Comparison Contraindications Herbal/PT Preference Tox & Drug Product Lookup RED BOOK Calculators

Search Drug, Disease, Interaction, and more

Ask Watson Search Micromedex drug information

Latest News

- Regulatory for Beer Labels
- Content Update Highlights
- First Cabot Award for IV

Support & Training

- Training Center
- User Guide
- Micromedex Compendia Resources
- Using Micromedex

Resources

- Black Box Warnings
- Comparative Tables
- Drugs Containing Drug List
- Drug Classes
- Drug Consults
- REBEL

PRINCIPAL.

GIET SCHOOL OF PHARMACY,  
NH-16, Chairanya Knowledge City  
RAJAMUNDY - 533 296



# GIET SCHOOL OF PHARMACY

(SRI KOUNDINYA EDUCATIONAL SOCIETY)

(Affiliated to Andhra University, Approved by AICTE & PCI)

NH-16, Chaitanya Knowledge City, RAJAMAHENDRAVARAM - 533 296, E.G. District., (A.P.)

Tel: 0883 - 2484444, E-mail: gietpharmacy@gmail.com, Website: www.gietpharmacy.in

## ECAP LOGIN PAGE

Home icon | gietcampus.com/GSF | + | 5 | Refresh icon

**GIET School of Pharmacy**  
Approved by PCI, Affiliated to A.U., Visakhapatnam  
Rajamahendravaram, A.P., India, Pin: 533296 | www.gietpharmacy.in

Employee Login | Student Login

User Name | Password | LOGIN

User Name | Password | LOGIN

Copyright © All rights reserved  
Powered by Webpro Solutions Pvt Ltd, Visakhapatnam

Home icon | gietcampus.com/GSF | + | 2 | Refresh icon

**GIET School of Pharmacy**  
Approved by PCI, Affiliated to A.U., Visakhapatnam  
Rajamahendravaram, A.P., India, Pin: 533296 | www.gietpharmacy.in

ACADEMICS | COURSEWORK | EMPLOYEE

Home | LEADER | EMPLOYEE | Search | Change Password

**EMPLOYEE SEARCH**

Employee Code:

Copyright © All rights reserved  
Powered by Webpro Solutions Pvt Ltd, Visakhapatnam

**PRINCIPAL.**  
**GIET SCHOOL OF PHARMACY**  
NH-16, Chaitanya Knowledge City  
RAJAMAHENDRAVARAM - 533 296